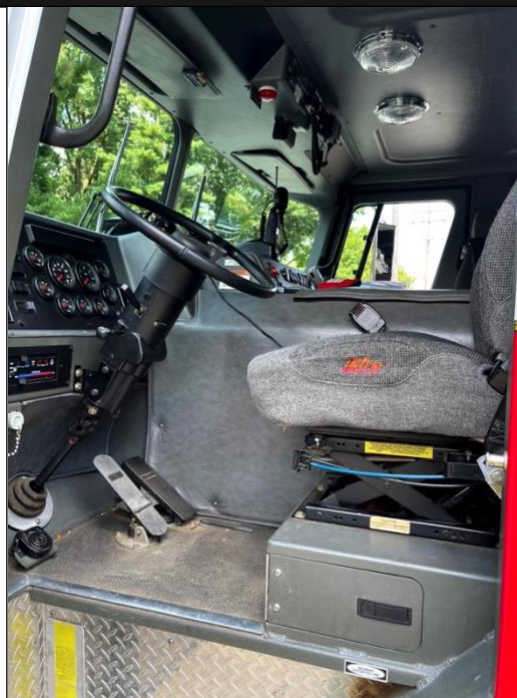




2000 E-One Pumper

27,563 Miles
 (6) Total Cab Seats (5) SCBA Seats
 Air Conditioning
 8.3 ISC Engine, 330 HP
 2,413 Engine Hours
 Allison Transmission
 Front Axle: 18,700#
 Rear Axle: 23,800#
 Front Tires: 385/65R22.5 Good Condition
 Rear Tires: 11R22.5 Good Condition
 Stainless Steel Wheel Covers
 Electronic Siren
 Air Horns in Bumper
 Kussmaul Battery Charger
 Air Shoreline
 Hale 1250 GPM Pump
 Current Pump Test
 1 1/2" Discharge in Bumper
 Akron Deck Gun (Triple Tips ONLY)
 1,000 Gallon Poly Tank
 OAL: 32'
 OAH: 9' 11"
 Honda Gas Generator 5KW
 (2) 120 Volt 750 Watt Scene Lights



To View More Photos, technical specs, and more visit www.firetruckresource.com

Equipment To Stay:
 24' & 14' Ladders
 (2) 6" Hard Suction Hose
 Electronic Siren
 Honda 5KW Generator
 Akron Deck Gun (TIPS ONLY)
 Axes On Outside
 INTAKE VALVES NOT INCLUDED

